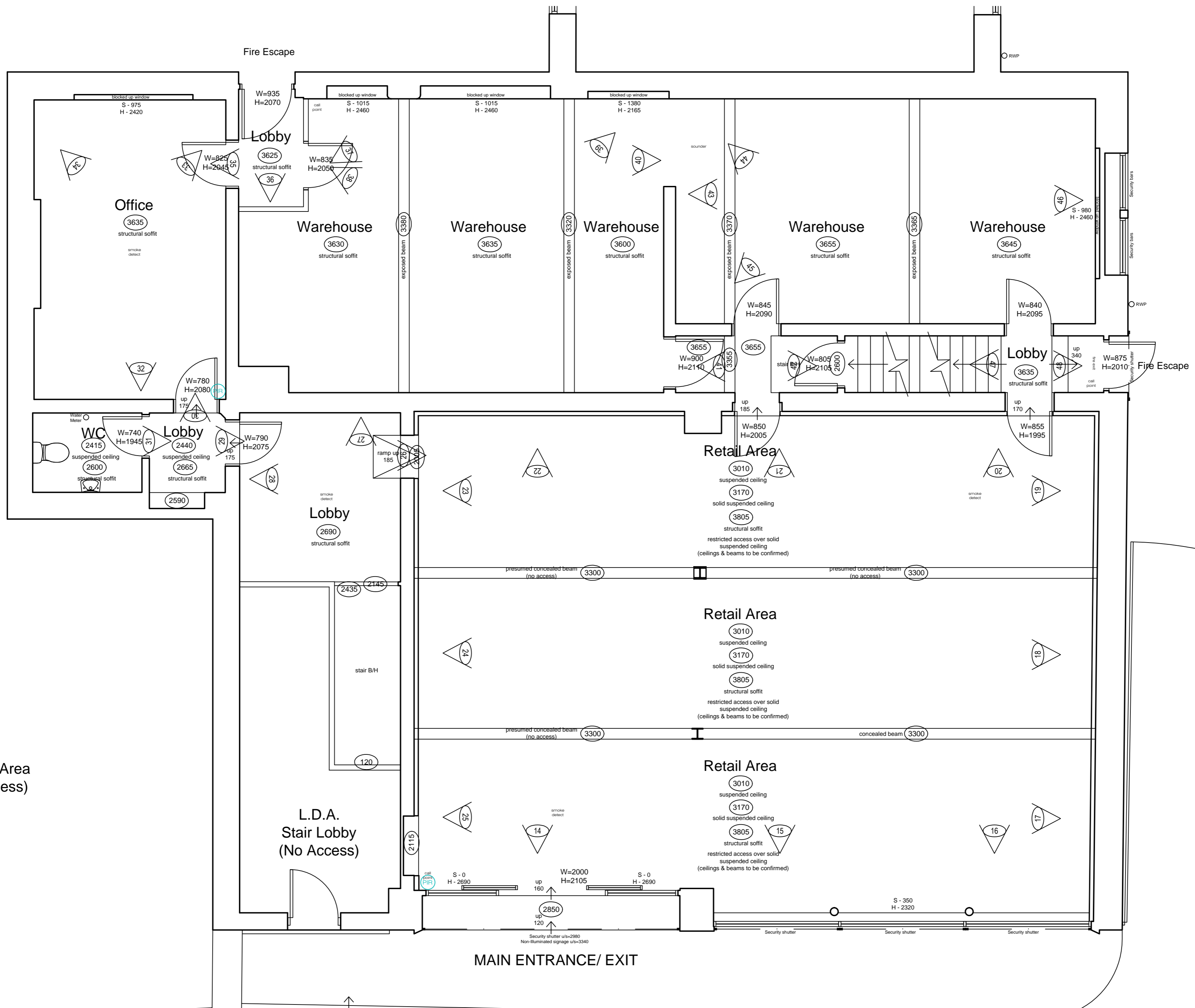


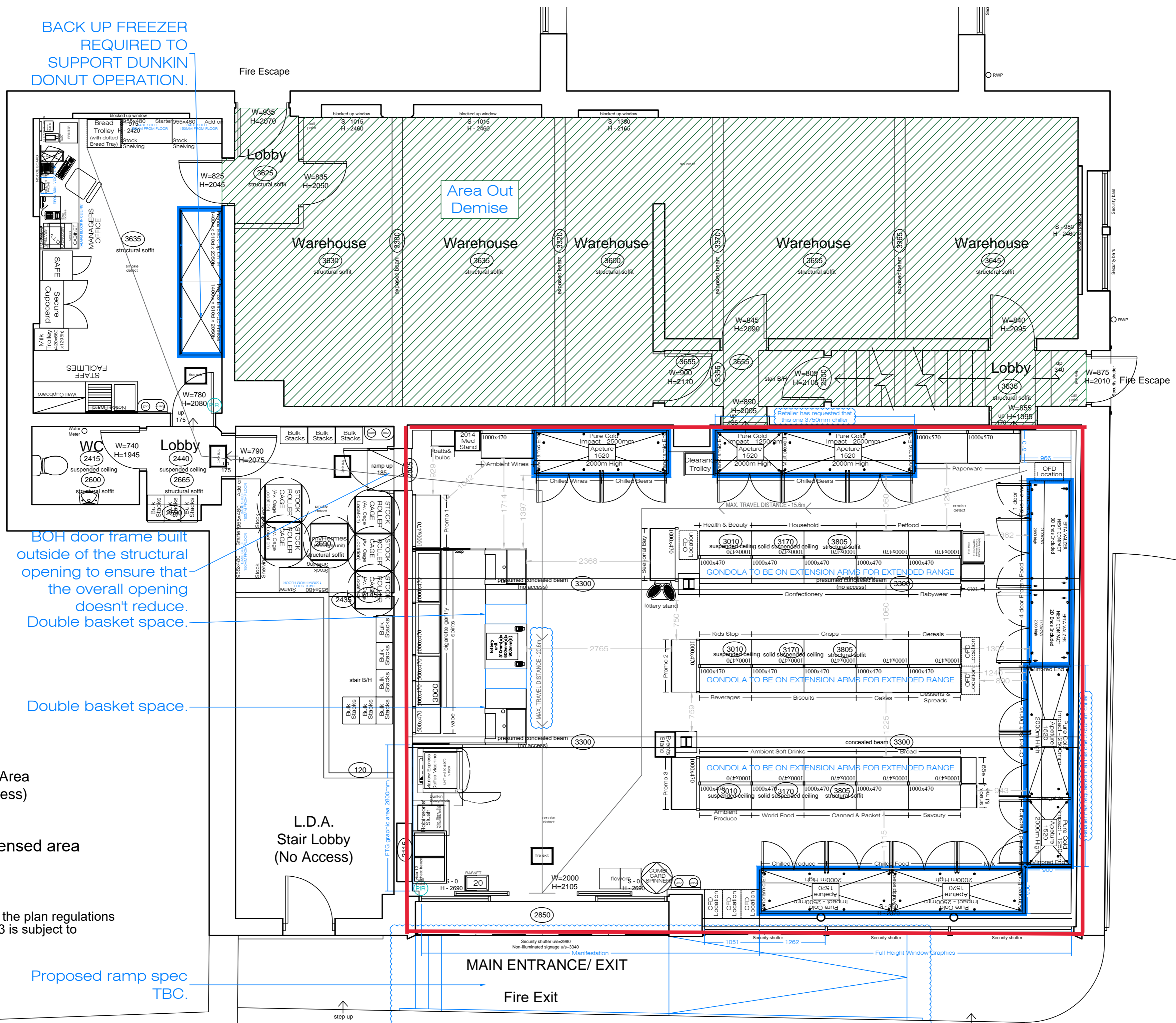
any changes to store layout must not be progressed without prior consent from the RD approval process  
 please contact the one|stop design team for further information

- chilled beer
- chilled wine
- ambient wine
- wine wow
- chilled foods
- milk
- frozen foods
- take home ice cream
- ice cream impulse
- ambient produce
- bread
- cakes
- cereals
- dessert & spreads
- canned & packet
- ethnic
- savory
- beverages
- biscuits
- vertical news
- magazines
- cards
- health & beauty
- babycare
- paperware
- household & laundry
- petfood
- countline confectionery
- hanging confectionery
- crisps & snacks
- adult snacks
- ambient soft drinks
- kids stop
- promo 1 - 4
- £1 bay
- grocery hot spot
- gantry
- spirit
- permanent stands
- stat (1m if req)
- indicate mods
- indicate sqt2 (retail & both)
- indicate banding



Garden Area  
(No Access)

BACK UP FREEZER  
REQUIRED TO  
SUPPORT DUNKIN  
DONUT OPERATION.



BOH door frame built  
outside of the structural  
opening to ensure that  
the overall opening  
doesn't reduce.  
Double basket space.

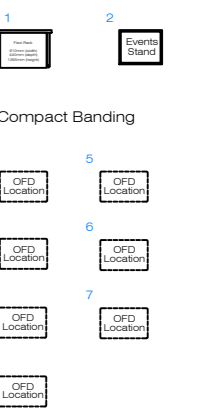
Double basket space.

Garden Area  
(No Access)

Licensed area

Proposed ramp spec  
TBC.

Any item not covered by the plan regulations  
of the Licensing Act 2003 is subject to  
change without notice.



linear comparison

	Existing	Target
Total	0.0	

retailer approved

print name

signed

rev approved

date

Rev description notes

a Ramp revision cloud added, BOH door updated & new enclosure added and other

and other details added.

b Retailer requests. News & mags removed. Cakes onto a spinner and other merch changes.

stock room size

store profile:

Grocery

ofd store grading:

Metal Stands - 2

Combined: Con

sales area: 111

1,282

stock area: 41

442

Post Office: 0.0 r

0.0 ft

project type:

franchise

store address:

Unit 1,

35 Fore Street,

Lower Darwen,

BB3 0QD.

store code: 6732

drawn by: Steven Ruge

date: 07.02.24

scale: 1:50

as approved by retail design g



SHOPFIT PLAN PROPOSED

dwg no: PR - 6732

job